

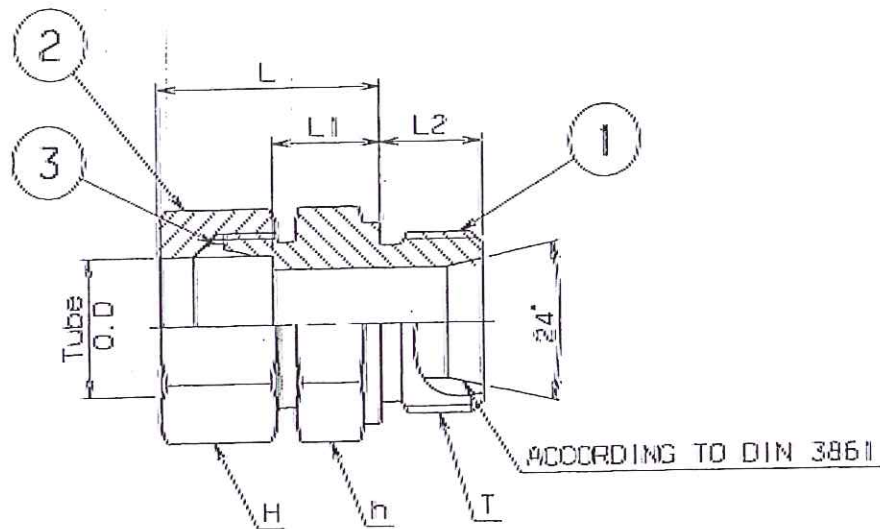
GRADE No.	N1	N2	N3	N4	N5	N6	N7	N8	N9	N10	N11	N12
VALUE	0.025	0.05	0.1	0.2	0.4	0.8	1.6	3.2	6.3	12.5	25	50
SYMBOL												
SURFACE ROUGHNESS												

NOTE

THE STRENGTH AND NO AIR LEAKAGE SHALL BE GUARANTEED UNDER THE CONDITION OF NO. 1 AND 2.

1. TEMPERATURE RANGE : -40 - +80°C
2. OPERATING PRESSURE : MAX. 80 BAR

1. END FITTING SHALL BE OF FLARELESS DOUBLE COMPRESSION TYPE & CONFIRM TO SPECIFICATION: DIN2353 (ISO8434-1)
- SHALL BE APPLIED FOR DIMENSIONS NOT SPECIFIED AT DRAWING



MACHINING DEVIATIONS FOR LINEAR DIMENSIONS	RANGE	0 - 6	6 - 30	30 - 120	120 - 315	315-1000	1000-2000	2000-4000	ABOVE 4000
TOLERANCE		±0.1	±0.2	±0.3	±0.5	±0.8	±1.2	±2	±3
FOR DIMENSIONAL TOLERANCES OF SHEET METAL PARTS AND WELDED STRUCTURES, REFER STD. RD-227									
UNSPECIFIED TOLERANCE FOR LINEAR AND ANGULAR DIMENSIONS REF. IS 2102 (PT-1) (MEDIUM)									
VALUES OF SURFACE TEXTURE SHALL BE AS PER COMPANY STD DS. 1012.C.									
QUALITY OF WELD JOINTS REF, RD-230 MEDIUM									
PROTO / PILOT / PRODUCTION									

PART NO.	TUBE O.D (mm)	T (Metric)	WIDTH ACROSS FLAT		L	L1	L2
			H	h			
909-60216	10	M14x1.5	19	19	27	12	12

UNCONTROLLED COPY

3	1	909-60709	SLEEVE		SUS316	
2	1		NUT		SUS316	
1	1		BODY		SUS316	
SL No.	QTY	DRG. / STOCK No.	DESCRIPTION	SIZE	COMPANY STD/IS STD	Wt.Kg.
DETAIL PARTS						
PRODUCT DMRC 8 CAR						
SURFACE TREATMENT						
APPROVED						
CHECKED						
DRAWN						
REF DRG EE01838-400						
SCALE NTS						
SHEET 1 of 1						
Wt (Kg)						
ALT						
TITLE MALE CONNECTOR(HOSE FITTING)						
DRG No. 909-60216						
ALT						

BEML LIMITED
R&D, BANGALORE COMPLEX
BANGALORE 560 075

MALE CONNECTOR(HOSE FITTING)

DRG No. 909-60216

A3